

B

Pno.

19 (8^{va})

f *f* *f* *f*

B

Pno.

25

f *f* *f* *f* *f* *ff*

B

Pno.

31

li *f* be rail pren ce

f *ff* *mp* *mf*

LIBERA IL PRENCE

3

B

37

la co lom bae quel la che di se cre ti fu ri ve la tri ce

Pno.

B

43

mf co m'es ser cre da il suo signor ru

Pno.

B

49

bel la non ar di più tor nar nuziain fe li ce il so pran

Pno.

55

B

du ce i mi nordu ciap pel la e lor mos tra la car taeco si

Pno.

55

cresc.

61

B

di ce

61

Pno.

ff

67

B

mol

ve

Pno.

67

p

1

91

B

den za del Si gnor dè cie li

Pno.

97

B

la pro vi den za del Si gnor dè

Pno.

103

B

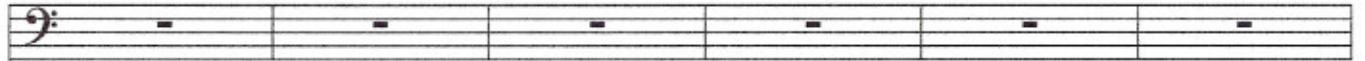
cie *f* li *tr* *8va*

Pno.

f *pp* usare la stessa espressione iniziale

109

B

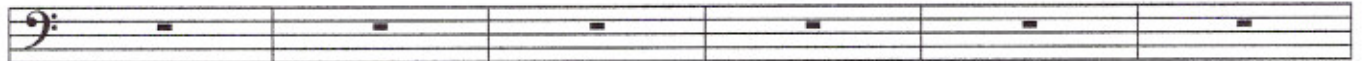


Pno.

Piano accompaniment for measures 109-114. The right hand features a continuous eighth-note arpeggiated pattern, starting with a 8^{va} (octave) marking. The left hand plays a steady eighth-note accompaniment. The key signature changes from one sharp (F#) to two sharps (F# and C#) at measure 113.

115

B

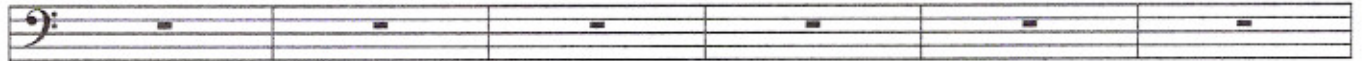


Pno.

Piano accompaniment for measures 115-120. The right hand features a continuous eighth-note arpeggiated pattern with 8^{va} markings. The left hand plays a steady eighth-note accompaniment.

121

B

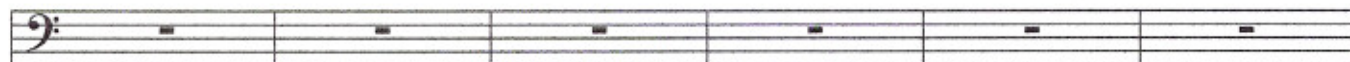


Pno.

Piano accompaniment for measures 121-126. The right hand features a continuous eighth-note arpeggiated pattern with 8^{va} markings. The left hand plays a steady eighth-note accompaniment.

127

B

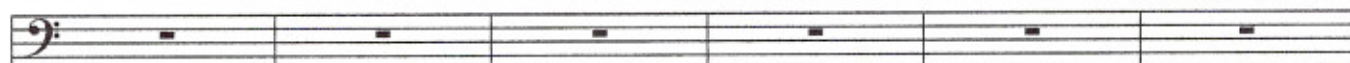


127

Pno.

133

B



133

Pno.

139

B

li *f* be rail pren ce la co lom bae quel la che di se cre ti

139

Pno.

145

B

fu ri ve la tri ce

Pno.

ff

8^{vb}

151

B

151

Pno.

p

f

tr

tr

tr

8^{vb}

157

B

157

Pno.

fffz

fffz